

 **Nakayama**  
SINCE 1908

 **Nakayama**  
SINCE 1908



Think Big, Start Small, Grow Fast

**NE100JP**

Designed for a Carbon-Neutral Future

Head Office and Factory : 2246-1, Amagu, Asahicho, Takeo City, Saga Pref., 843-0001, Japan  
TEL: (81) 954-22-4171 FAX: (81) 954-23-0691  
E-MAIL: overseas@nakayamairon.co.jp

[www.ncjpn.com](http://www.ncjpn.com)



Singapore (NCSS) : 10 Anson Rd #24-03A, International Plaza, Singapore 079903  
United Kingdom (NAKAYAMA R&D) : Unit B15, Omagh Enterprise Centre, Great Northern Road,  
Omagh, Co. Tyrone, BT78 5LU, United Kingdom

English Version



Eco Plug-in Mobile Crusher

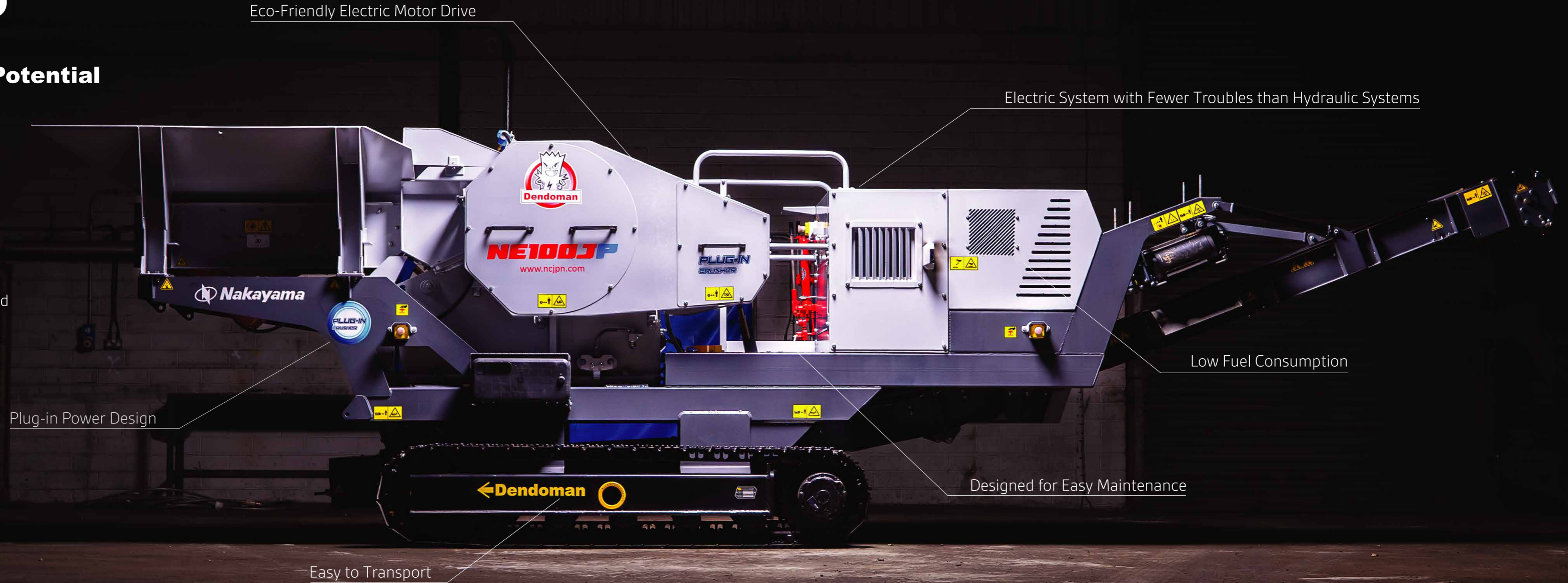
# NE100JP

## Expand Your Business Potential

Our electric crusher overcomes challenges where diesel crushers face limitations.

Ideal for:

- Noise-sensitive urban areas
- Underground construction sites
- Zero-emission initiatives
- Eco-friendly construction projects
- Indoor worksites with strict noise and emission regulations
- Early morning and nighttime operations



Eco-Friendly Electric Motor Drive

Electric System with Fewer Troubles than Hydraulic Systems

Low Fuel Consumption

Designed for Easy Maintenance

Easy to Transport

Plug-in Power Design

# Capabilities

# NE100JP

## JAW CRUSHER SIZE

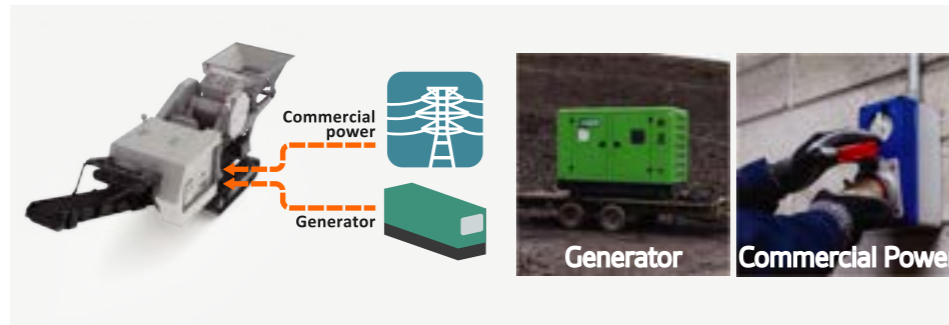


## CRUSHING CAPACITY : 15-50 t/h

### DURABILITY

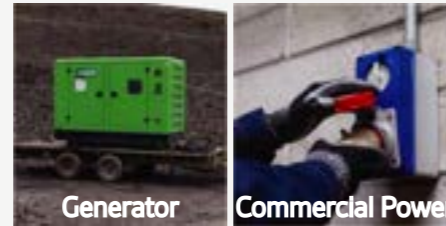
The NE100JP is equipped with the AC2415 jaw crusher, a well-proven and highly trusted model with over 300 units in operation.

- Proven durability and robustness through years of use in quarries
- CSS Range: 20–50 mm (minimum)



## POWER SOURCES

Two Power Options Available. Compatible with 60kVA plug-in three-phase power



## CRUSHING APPLICATIONS

- Concrete
- Asphalt
- Rocks
- Bricks

# NE100JP Highlights

## EASY MAINTENANCE

**No Consumable Parts or Fuel Refilling:** The electric motor eliminates the need for regular part replacements and refueling required in engine-driven models.

**Simplified Troubleshooting:** No hydraulics means fewer breakdowns and faster issue detection, minimizing downtime.



## NOISE REDUCTION

Replacing the diesel engine with an electric motor significantly reduces noise levels, ensuring quieter operation.



## MAGNETIC SEPARATOR

Efficiently removes metal contaminants from crushed materials, ensuring cleaner output and protecting downstream equipment.



## USER-FRIENDLY TOUCH PANEL

The touch panel allows users to check machine settings, track parts replacement history, and more for seamless operation.

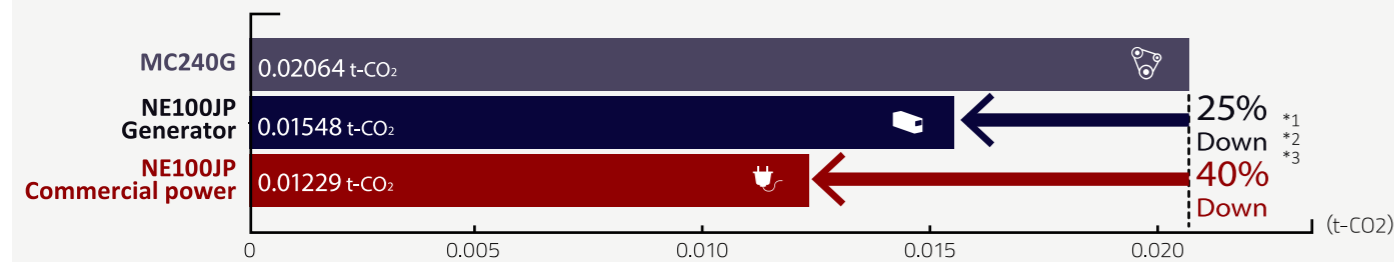


# Key Features

# NE100JP

## Low CO<sub>2</sub> Emissions

Comparing CO<sub>2</sub> Emissions per Hour: NE100JP vs. Our Hydraulic Drive Crusher



The electric-drive crusher has lower fuel consumption which resulted in drastic reduction of CO<sub>2</sub> emissions.

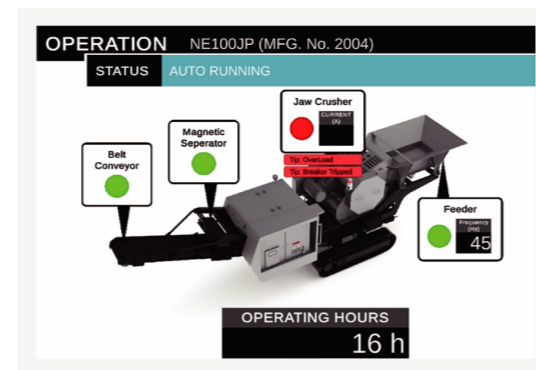
- MC240G (Diesel Hydraulic Drive)
- NE100JP (Diesel Generator Drive)
- NE100JP (Commercial Power Supply)

## IoT Monitoring System: "N-Link"

The N-Link IoT system enables real-time machine monitoring from anywhere.

The operating status can be checked remotely, ensuring efficient management and quick response to issues.

- Real-time production monitoring
- Continuous monitoring of machine status
- Quick trouble detection
- Integrated with Touch Panel Control: Enables remote monitoring and guided troubleshooting.



## Easy Transportation



**Controller-Based Operation**  
Enables smooth control and greater flexibility



**Transportable by a 10-ton truck**  
Compact design for easy mobility



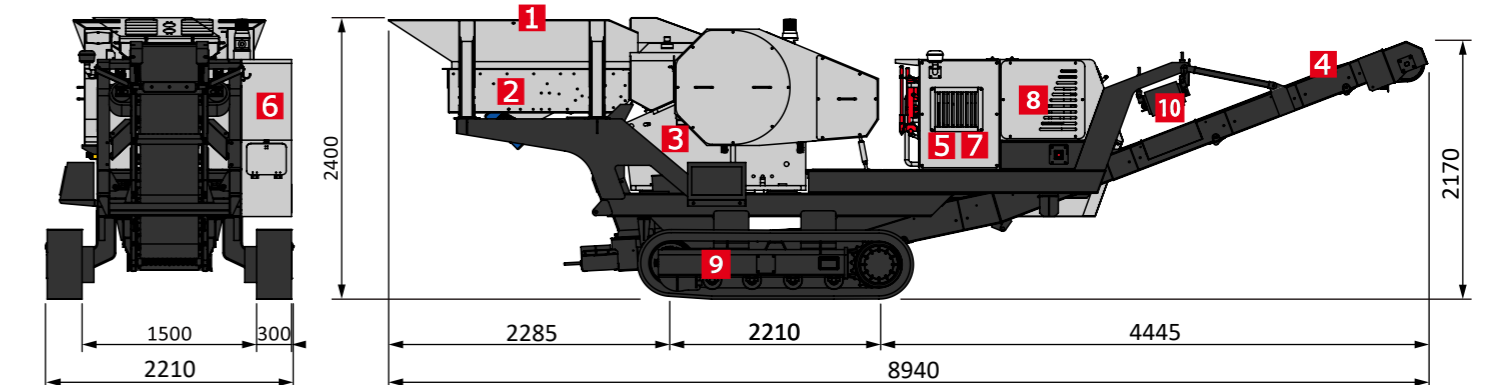
**Compact Size**  
Fits into a 40ft high-cube dry container

## Specifications\*

### NAMES OF COMPONENTS

- 1 Feed Hopper
- 2 Grizzly Feeder
- 3 Jaw Crusher
- 4 Belt Conveyor
- 5 Engine (Travel)
- 6 Control Panel
- 7 Fuel Tank
- 8 Hydraulic Oil Tank
- 9 Crawler
- 10 Magnetic Separator

### EXTERNAL DIMENSIONS



MODEL	JAW CRUSHER		GRIZZLY FEEDER		APPROX. CAPACITY (TPH)	MAX. FEED SIZE T×W×L (mm)	APPROX. WEIGHT (TON)	
	MODEL	FEED OPENING W×L(mm)	MODEL	TROUGH SIZE W×L(mm)			WITH DIESEL GENERATOR	WITHOUT
NE100JP	AC2415	600×370	GFT616H	600×1600	15~50	265×330×600	-	10.2